

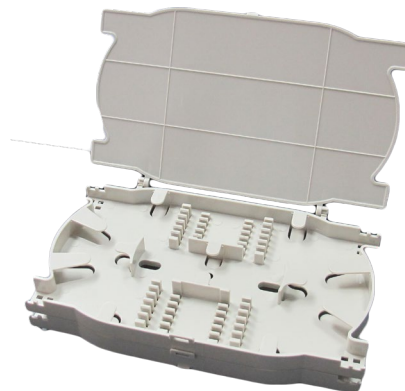
PRODUCT SPECIFICATION

SPLICE TRAY

INTRODUCTION

Lux's splice tray offers additional protection for fusion splice protection sleeves. This splice tray is designed for various applications such as fiber distribution, LAN/WAN, FTTx, CATV etc.

This splice tray is engineered for usage with indoor and outdoor splice hardware with both loose buffered & tight buffered optical cable. The splice tray can be stacked with each other for higher splicing capacity.



TECHNICAL INFORMATION

Dimension 95(H) x 170(W) x 14(D) mm

Capacity Max: 24 Ports

Material ABS

Color Beige / Black

Package 10pcs per pack

ENVIRONMENTAL PROPERTIES

Storage and shipment temperature: - 20°C to 60°C

Operating and Installation temperature: - 20°C to 60°C

Restriction of Hazardous Substances (RoHS) Compliance: All materials & components meet the requirements of Directive 2002/95/EC.

ORDERING PART NUMBER

Example: FST-12BL = 12F Splice Tray (Black)

Character	F	S	T	-	A	B	C	D
Example	F	S	T	-	1	2	B	L

AB – FIBER COUNT

12 = 12 Fiber
24 = 24 Fiber

CD - COLOR

BL = Black
GY = Grey

The information and specification in this document are subjected to change without notice

