



PRODUCT SPECIFICATION

HIGH DENSITY COPPER PATCH PANEL

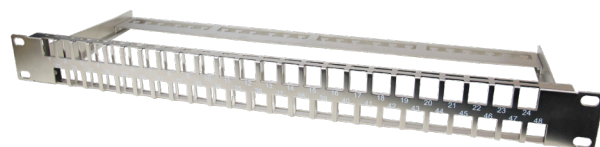
INTRODUCTION

Lux's high density shielded and unshielded patch panel supports up to 48 x RJ45 keystone jacks in 1RU. The patch panels are available in unloaded modular type, which provides flexibility in design, MAC and maintenance.

HIGH DENSITY COPPER PATCH PANEL

All panels are built-in with strain relief bar for easy cable management and proper cable support.

The associated transmission performance is fully complied with the ISO 11801-1, EN 50173-1 and ANSI/TIA/EIA-568-D.2 standard based on different type of RJ45 Keystone Jacks.



REFERENCE STANDARDS

- RoHs/REACH complied
- TIA/EIA-568-D.2; ISO 11801 Class D, EN 50173-1

APPLICATIONS

- 10BASE-T (Ethernet)
- 100BASE-T (Fast Ethernet)
- 1000BASE-T (Gigabit Ethernet)
- 10GBASE-T (Gigabit Ethernet)
- Supports IEEE 802.3bt
- Any other Cat 5e/ Cat 6/ Cat 6A applications

FEATURES

- Accepts all RJ45 keystone jacks
- Built-in strain relief bar
- Accepts 22-24 AWG solid or stranded cable copper conductor
- 25-year system warranty available

SPECIFICATIONS (PATCH PANEL)

Panel:	SPCC 1.5mm thickness
Strain Relief Bar:	SPCC 1.5mm thickness
Color:	Black (Unshielded) / Chrome (Shielded)
Category:	CAT5e, CAT6 and CAT6A

The information and specification in this document are subjected to change without notice





COMMUNICATIONS

Let's Get Connected

PRODUCT NUMBER

Example: CPP-1U-48-S-F-6A = 1U 48port STP High Density Patch Panel, Flat, CAT6A Panel

Character	C	P	P	–	A	B	–	C	D	–	E	–	F	–	G	H
Example	C	P	P	–	1	U	–	4	8	–	S	–	F	–	6	A

AB – HEIGHT (U)	CD - PORT	E – SPECIFICATION	F – FLAT	GH – BLANK PANEL
1U = 1U	48 = 48 PORT	S = STP U = UTP	F = FLAT	XX = BLANK PANEL 5E= CAT5E 6X = CAT6 6A = CAT6A

The information and specification in this document are subjected to change without notice

