

PRODUCT SPECIFICATION

U/UTP CABLE, CATEGORY 6 (250MHz), PVC SHEATH

INTRODUCTION

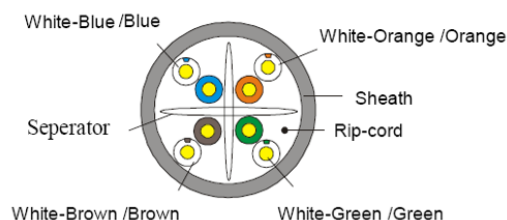
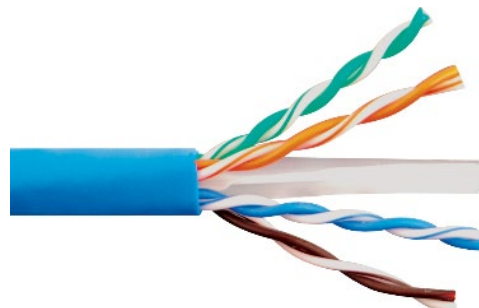
Lux Category 6 U/UTP Copper Network Cabling Solution is used for 10/100/1000BASE-T applications perform to the workstation or tie cable up to the cable segment of 100 meters. With well design and installation planning, the Category 6 U/UTP cable can support 10GBASE-T applications with cable lengths from 37 meters up to 55 meters.

CAT6 U/UTP CABLE

The 4-pair Category 6 U/UTP cable is composed of 24 AWG (0.52) solid bare copper conductors and fully complied with ISO/IEC11801 Class E and TIA/EIA-568-D.2 standards.

The cable sheath is marked with meter which allows simple and easy calculation of the cable remaining in the box. A cable measurement record table is printed on each box to help installers keep track of the lengths used.

The solution is suitable for all Category 6 copper network cabling.



FEATURES

- Conforms to Category 6 standards
- 24 AWG bare solid copper conductor
- Available in PVC or LSZH jacket
- 25-year system warranty available

REFERENCE STANDARDS

- RoHs/REACH complied
- Flame Test:
CM - UL1685 | CMR – UL1666 | CMP – UL910
- ISO/IEC 11801 Class E; TIA/EIA-568-D.2

APPLICATIONS

- 10BASE-T (Ethernet);
- 100BASE-TX (Fast Ethernet);
- 1000BASE-T (Gigabit Ethernet)
- Supports IEEE 802.3bt (90W)

SPECIFICATIONS

Product Number:	CCUU6X004CMG-XX (XX = Color Code; CM) CCUU6X004CMR-XX (XX = Color Code; CMR) CCUU6X004CMP-XX (XX = Color Code; CMP)	Electrical Characteristics (20°C)	1-100MHz Impedance (Ω) 100±10 100-250MHz Impedance (Ω) 100±20 DC Resistance(Ω/100m) max: 9.8
Category:	CAT6	Packing:	Carton Box
Conductor:	Solid Bare Copper 0.52mm Norm O.D. ±0.01	Carton:	40.5cm*40.5cm*21cm
Insulations:	HDPE; Diameter 0.93±0.08mm	Packing Length:	305±1.5m
Sheath:	Thickness: 0.55±0.05mm External O.D.: 5.6± 0.2mm Surface: Clean, Frap, Satiation Material: PVC Color: According to the requirement	Rip-cord:	Yes
Surface Printing:	Letter height: 3.0±0.3mm Color: Black Print error & space: ≤ ±0.5%, 1m	Drain Wire:	No
Core Color	1 White-Blue/Blue; 2 White-Orange/Orange 3 White-Green/Green; 4 White-Brown/Brown	Installation Temperature:	-20°C ~ +60°C
		Operation Temperature:	-20°C ~ +60°C

The information and specification in this document are subjected to change without notice

