

# PRODUCT SPECIFICATION

## U/UTP, CATEGORY 6 (250MHz), LSZH SHEATH

### INTRODUCTION

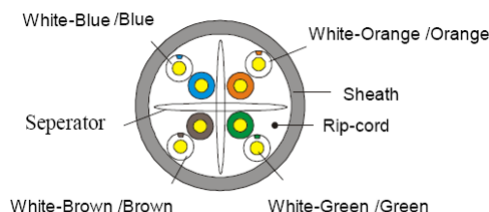
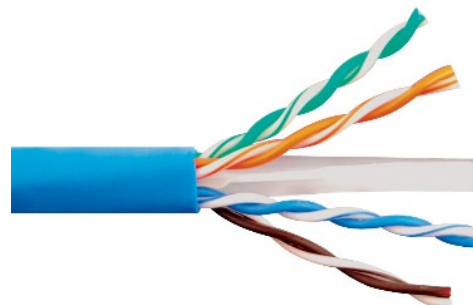
Lux Category 6 U/UTP Copper Network Cabling Solution is used for 10/100/1000BASE-T applications perform to the workstation or tie cable up to the cable segment of 100 meters. With well design and installation planning, the Category 6 U/UTP cable can support 10GBASE-T applications with cable lengths from 37 meters up to 55 meters.

### CAT6 U/UTP CABLE

The 4-pair Category 6 U/UTP cable is composed of 24 AWG (0.52) solid bare copper conductors and fully complied with ISO/IEC11801 Class E and TIA/EIA-568-D.2 standards.

The cable sheath is marked with meter which allows simple and easy calculation of the cable remaining in the box. A cable measurement record table is printed on each box to help installers keep track of the lengths used.

The solution is suitable for all Category 6 copper network cabling.



### FEATURES

- Conforms to Category 6 standards
- 24 AWG bare solid copper conductor
- Available in PVC or LSZH jacket
- 25-year system warranty available

### REFERENCE STANDARDS

- RoHs/REACH complied
- Flame Test: IEC 60332-1
- Acid Gas Test: IEC 60754-1&2
- Smoke Test: IEC 61034-1&2
- ISO/IEC 11801 Class E; TIA/EIA-568-D.2

### APPLICATIONS

- 10BASE-T (Ethernet)
- 100BASE-TX (Fast Ethernet)
- 1000BASE-T (Gigabit Ethernet)
- Supports IEEE 802.3bt (90W)

### SPECIFICATIONS

<b>Product Number:</b>	CCUU6X004LSZ-XX (XX = Color Code)	<b>Electrical Characteristics (20°C)</b>	1-100MHz Impedance (Ω) 100±10 100-250MHz Impedance (Ω) 100±20 DC Resistance( Ω/100m) max: 9.8
<b>Category:</b>	CAT6	<b>Packing:</b>	Carton Box
<b>Conductor:</b>	Solid Bare Copper 0.52mm Norm O.D. ±0.01	<b>Carton:</b>	40.5cm*40.5cm*21cm
<b>Insulation:</b>	HDPE; Diameter 0.93±0.08mm	<b>Packing Length:</b>	305±1.5m
<b>Sheath:</b>	Thickness: 0.55±0.05mm External O.D: 5.6± 0.2mm Surface: Clean, Frap, Satiation Material: LSZH Color: According to the requirement	<b>Rip-cord:</b>	Yes
<b>Surface Printing:</b>	Letter height: 3.0±0.3mm Color: Black Print error & space: ≤ ±0.5%,1m	<b>Drain Wire:</b>	No
<b>Core Color</b>	1 White-Blue/Blue; 2 White-Orange/Orange 3 White-Green/Green; 4 White-Brown/Brown	<b>Installation Temperature:</b>	-20°C ~ +60°C
		<b>Operation Temperature:</b>	-20°C ~ +60°C

The information and specification in this document are subjected to change without notice

