



COMMUNICATIONS

Let's Get Connected

PRODUCT SPECIFICATION

U/UTP CABLE, AWG 23 CATEGORY 6 (250MHz), LSZH

INTRODUCTION

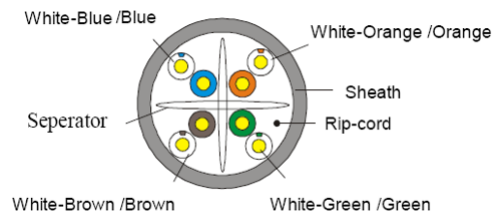
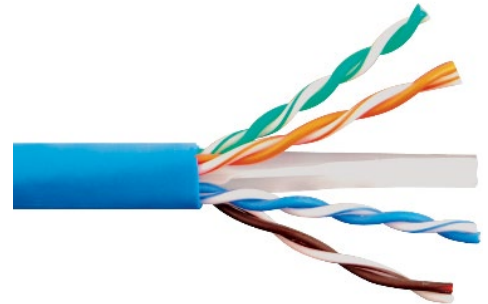
Lux Category 6 U/UTP Copper Network Cabling Solution is used for 10/100/1000BASE-T applications perform to the workstation or tie cable up to the cable segment of 100 meters. With well design and installation planning, the Category 6 U/UTP cable can support 10GBASE-T applications with cable lengths from 37 meters up to 55 meters.

CAT6 U/UTP CABLE

The 4-pair Category 6 U/UTP cable is composed of **23 AWG** (0.54) solid bare copper conductors and fully complied with ISO/IEC11801 Class E and TIA/EIA-568.D.2 standards.

The cable sheath is marked with meter which allows simple and easy calculation of the cable remaining in the box. A cable measurement record table is printed on each box to help installers keep track of the lengths used.

The solution is suitable for all Category 6 copper network cabling.



FEATURES

- Conforms to Category 6 standards
- **23 AWG** bare solid copper conductor
- LSZH outer sheath
- 25-year system warranty available

REFERENCE STANDARDS

- Flame Test: IEC 60332-1-&2
- Acid Gas Test: IEC 60754-2
- Smoke Test: IEC 61034-2
- ISO/IEC 11801 2nd Ed Class E
- TIA/EIA-568.D.2

APPLICATIONS

- 10BASE-T (Ethernet)
- 100BASE-TX (Fast Ethernet)
- 1000BASE-T (Gigabit Ethernet)
- Supports IEEE 802.3bt (90W)

SPECIFICATIONS

Product Number: CCUU6X004L2Z-XX (XX = Color Code)

Category: CAT6

Conductor: Solid Bare Copper
0.54mm Norm O.D. ± 0.01 mm

Insulation: HDPE; Diameter ≤ 0.9 mm

Sheath: Thickness: 0.5 ± 0.05 mm
External O.D: 6.0 ± 0.3 mm
Surface: Clean, Frap, Satiation
Material: LSZH
Color: According to the requirement

Surface Printing: Letter height: 3.0 ± 0.3 mm
Color: Black
Print error & space: $\leq \pm 0.5\%$, 1m

Core Color 1 White-Blue/Blue; 2 White-Orange/Orange
3 White-Green/Green; 4 White-Brown/Brown

Electrical Characteristics (20°C)
1-100MHz Impedance (Ω) 100 ± 15
100-250MHz Impedance (Ω) 100 ± 20
DC Resistance ($\Omega/100m$) max: 9.38

Packing: Reel Box

Weight: 40KG/km

Packing Length: 305 ± 1.5 m

Rip-cord: Yes

Drain Wire: No

Installation Temperature: $-20^\circ\text{C} \sim +60^\circ\text{C}$

Operation Temperature: $-20^\circ\text{C} \sim +60^\circ\text{C}$



The information and specification in this document are subjected to change without notice