

# PRODUCT SPECIFICATION

## U/UTP CABLE, CATEGORY 6 (250MHz), LSFRZH

### INTRODUCTION

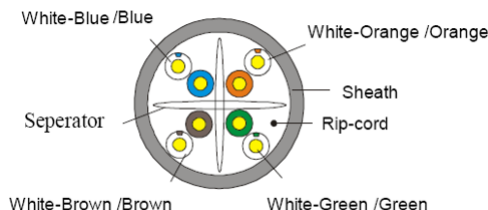
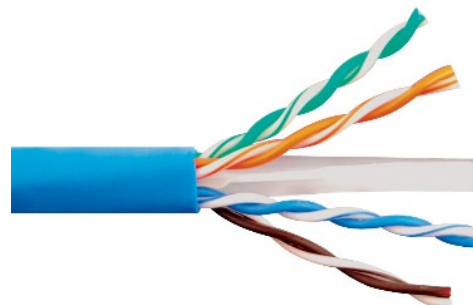
Lux Category 6 U/UTP Copper Network Cabling Solution is used for 10/100/1000BASE-T applications perform to the workstation or tie cable up to the cable segment of 100 meters. With well design and installation planning, the Category 6 U/UTP cable can support 10GBASE-T applications with cable lengths from 37 meters up to 55 meters.

### CAT6 U/UTP CABLE

The 4-pair Category 6 U/UTP cable is composed of 23 AWG (0.54) solid bare copper conductors and fully complied with ISO/IEC11801 Class E and TIA/EIA-568.D.2 standards.

The cable sheath is marked with meter which allows simple and easy calculation of the cable remaining in the box. A cable measurement record table is printed on each box to help installers keep track of the lengths used.

The solution is suitable for all Category 6 copper network cabling.



### FEATURES

- Conforms to Category 6 standards
- 23 AWG bare solid copper conductor
- Fire retardant outer sheath (FRT)
- 25-year system warranty available

### REFERENCE STANDARDS

- EN 50575 CPR B2ca s1a-d1-a1
- Flame Test: IEC 60332-1 & 60332-3
- Acid Gas Test: IEC 60754-2
- Smoke Test: IEC 61034
- ISO/IEC 11801 2<sup>nd</sup> Ed Class E
- TIA/EIA-568.D.2

### APPLICATIONS

- 10BASE-T (Ethernet)
- 100BASE-TX (Fast Ethernet)
- 1000BASE-T (Gigabit Ethernet)
- Supports IEEE 802.3bt (90W)

### SPECIFICATIONS

**Product Number:** CCUU6X004LSR-XX (XX = Color Code)

**Category:** CAT6

**Conductor:** Solid Bare Copper  
0.54mm Norm O.D.

**Insulation:** HDPE; Diameter  $\leq 0.9$  mm

**Sheath:** Thickness:  $0.7 \pm 0.05$  mm  
External O.D:  $6.2 \pm 0.4$  mm  
Surface: Clean, Frap, Satiation  
Material: LSFRZH  
Color: According to the requirement

**Surface Printing:** Letter height:  $3.0 \pm 0.3$  mm  
Color: Black  
Print error & space:  $\leq \pm 0.5\%$ , 1m

**Core Color** 1 White-Blue/Blue; 2 White-Orange/Orange  
3 White-Green/Green; 4 White-Brown/Brown

**Electrical Characteristics (20°C)** 1-100MHz Impedance ( $\Omega$ )  $100 \pm 15$   
100-250MHz Impedance ( $\Omega$ )  $100 \pm 20$   
DC Resistance(  $\Omega/100m$ ) max: 9.1

**Packing:** Drum

**Weight:** 43.2kg

**Packing Length:**  $500 \pm 1.5$  m

**Rip-cord:** Yes

**Drain Wire:** No

**Installation Temperature:**  $-20^\circ\text{C} \sim +60^\circ\text{C}$

**Operation Temperature:**  $-20^\circ\text{C} \sim +60^\circ\text{C}$

The information and specification in this document are subjected to change without notice

