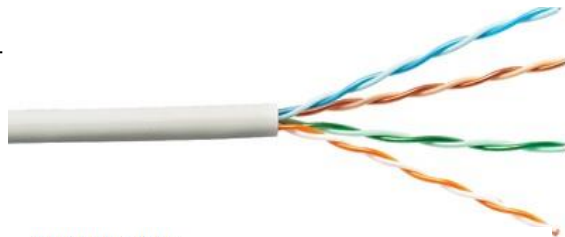


PRODUCT SPECIFICATION

U/UTP CABLE, CATEGORY 5e (100MHz), PVC SHEATH

INTRODUCTION

Lux Category 5e U/UTP Copper Network Cabling Solution carries up to one Gigabit of data per second over an Ethernet channel within 100m of cable segment. The solution is quick and easy to install with no special installation tools required.

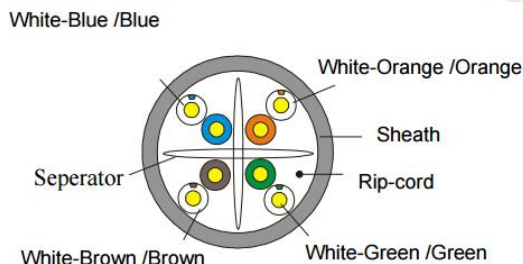


CAT5E U/UTP CABLE

The 4-pair Category 5e U/UTP cable is composed by 24 AWG (0.49) solid bare copper conductors and fully complied with ISO/IEC11801 Class D and TIA/EIA-568-D.2 standards.

The cable sheath is marked with meter which allows simple and easy calculation of the cable remaining in the box. A cable measurement record table is printed on each box to help installers keep track of the lengths used.

The solution is suitable for all Category 5e copper network cabling.



FEATURES

- Conforms to Category 5e standards
- 24 AWG bare solid copper conductor
- Available in PVC or LSZH jacket
- 25-year system warranty available

REFERENCE STANDARDS

- RoHs/REACH complied
- Flame Test:
CM - UL1685 | CMR - UL1666 | CMP - UL910
- ISO/IEC 11801 Class D; TIA/EIA-568-D.2

APPLICATIONS

- 10BASE-T (Ethernet)
- 100BASE-TX (Fast Ethernet)
- 1000BASE-T (Gigabit Ethernet)

SPECIFICATIONS

Product Number:	CCUU5E004CMGXX (XX = Color Code; CMG) CCUU5E004CMRXX (XX = Color Code; CMR) CCUU5E004CMPXX (XX = Color Code; CMP)	Electrical Characteristics (20°C)	1.0-100MHz Impedance (Ω) 100 ± 15 1.0-100MHz Delay Skew (ns/100m) ≤ 45 DC Resistance (Ω /100m) max: 9.5 DC Conductor Resistance Unbalance (%) max 5.0
Category:	CAT5e	Packing:	Carton Box
Conductor:	Solid Bare Copper 0.49mm Norm O.D. ± 0.005	Carton:	35cm*35cm*20cm
Insulation:	HDPE; Diameter 0.87 ± 0.03 mm	Packing Length:	305 ± 1.5 m
Sheath:	Thickness: 0.50 ± 0.05 mm External O.D.: 5.0 ± 0.4 mm Surface: Clean, Frap, Satiation Material: PVC Color: According to the requirement	Rip-cord:	Yes
Surface Printing:	Letter height: 3.0 ± 0.3 mm Color: Black Print error & space: $\leq \pm 0.5\%$, 1m	Drain Wire:	No
Core Color	1 White-Blue/Blue; 2 White-Orange/Orange 3 White-Green/Green; 4 White-Brown/Brown	Installation Temperature:	$0^\circ\text{C} \sim +50^\circ\text{C}$
		Operating Temperature:	$30^\circ\text{C} \sim +50^\circ\text{C}$

The information and specification in this document are subjected to change without notice